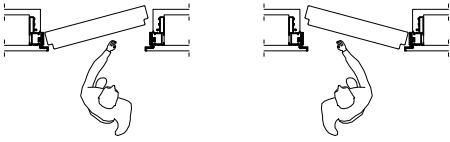


PLANO 45

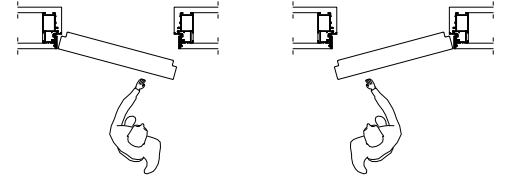
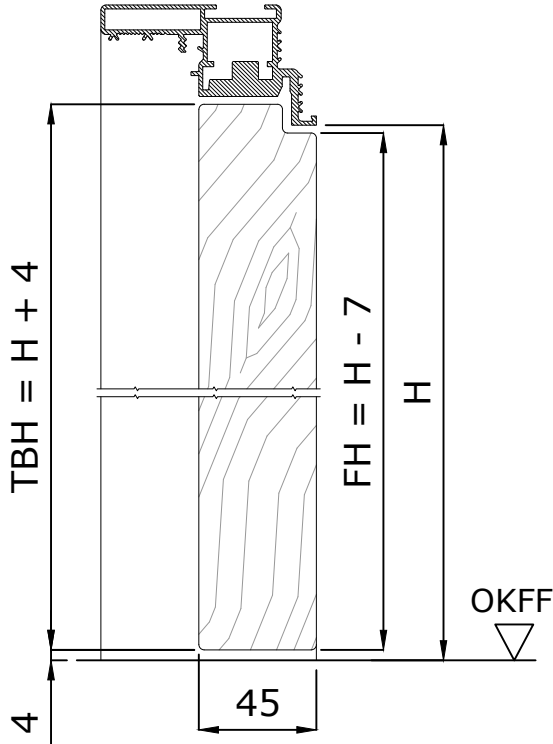
Hinweise zur Türblattfertigung

0338

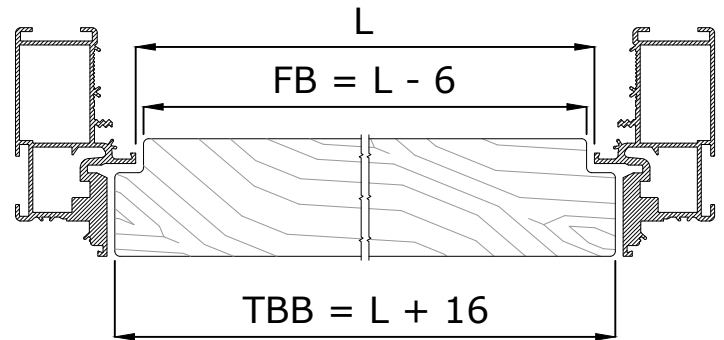
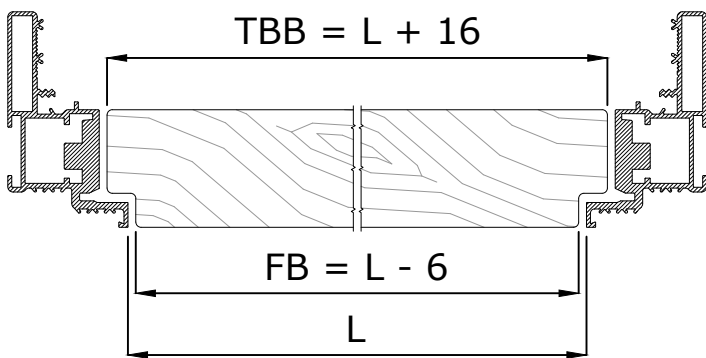
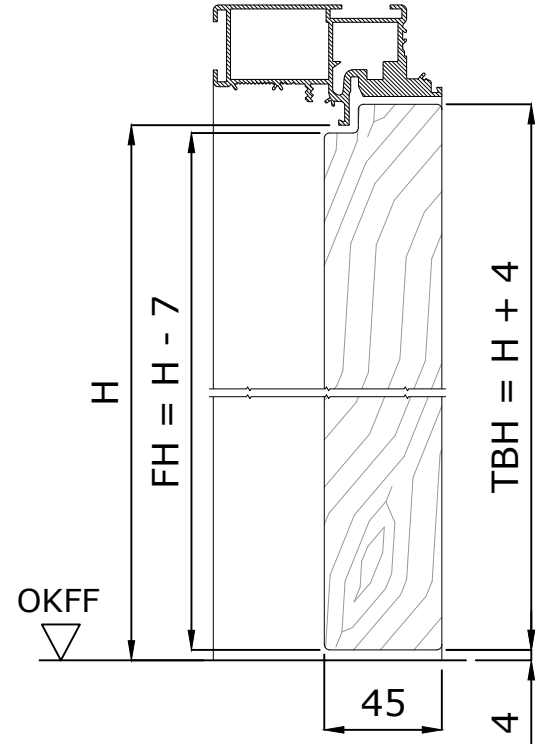
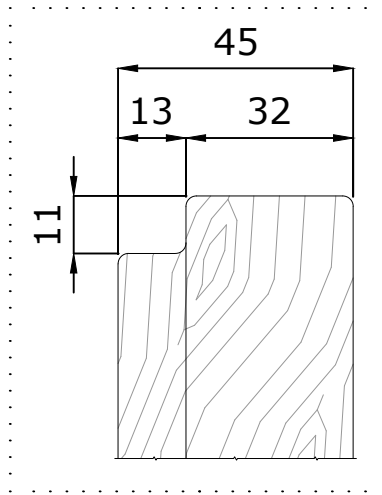
02



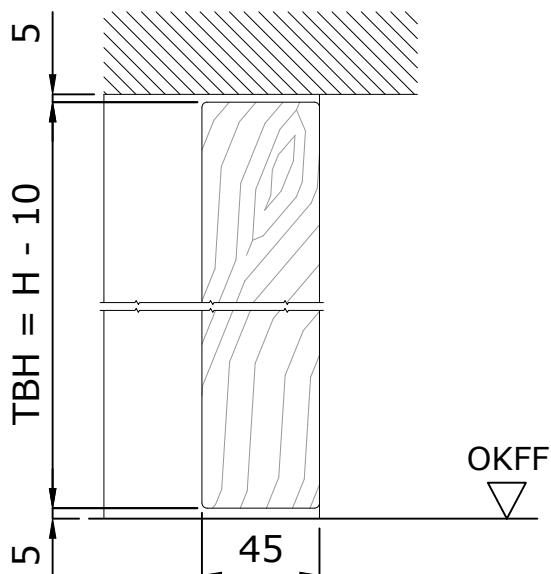
Ausführung "Drücken" mit Sturz



Ausführung "Ziehen" mit Sturz



Ausführung ohne Sturz



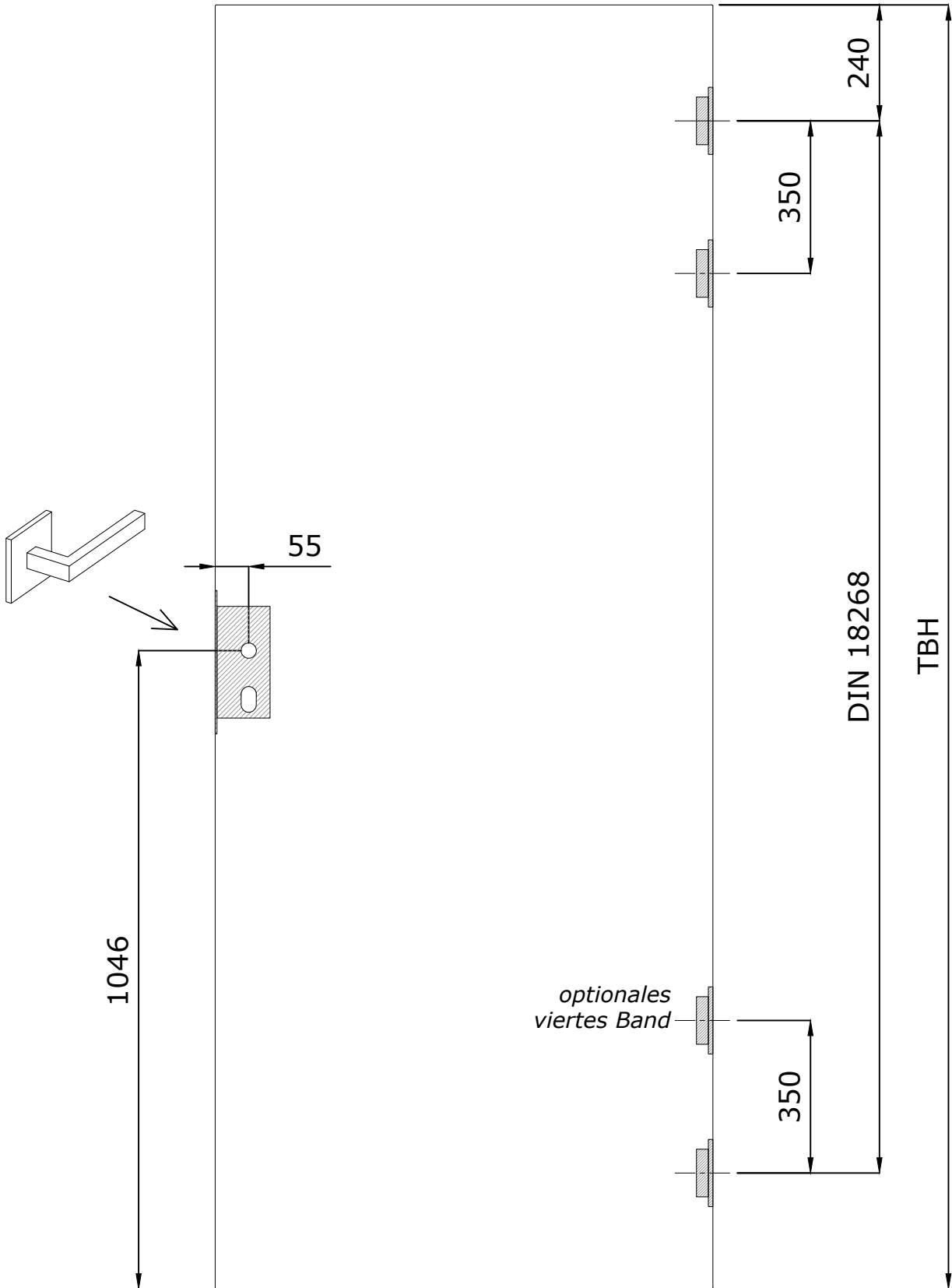
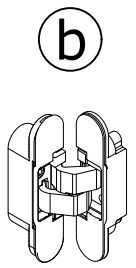
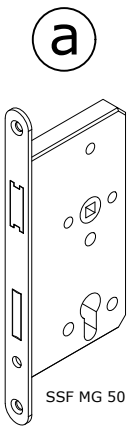
Legende

- TBB = Türblattbreite
- TBH = Türblatthöhe
- H = Lichte Höhe
- FH = Falzhöhe
- FB = Falzbreite
- L = Lichte Breite
- OKFF = Oberkante fertiger Fußboden

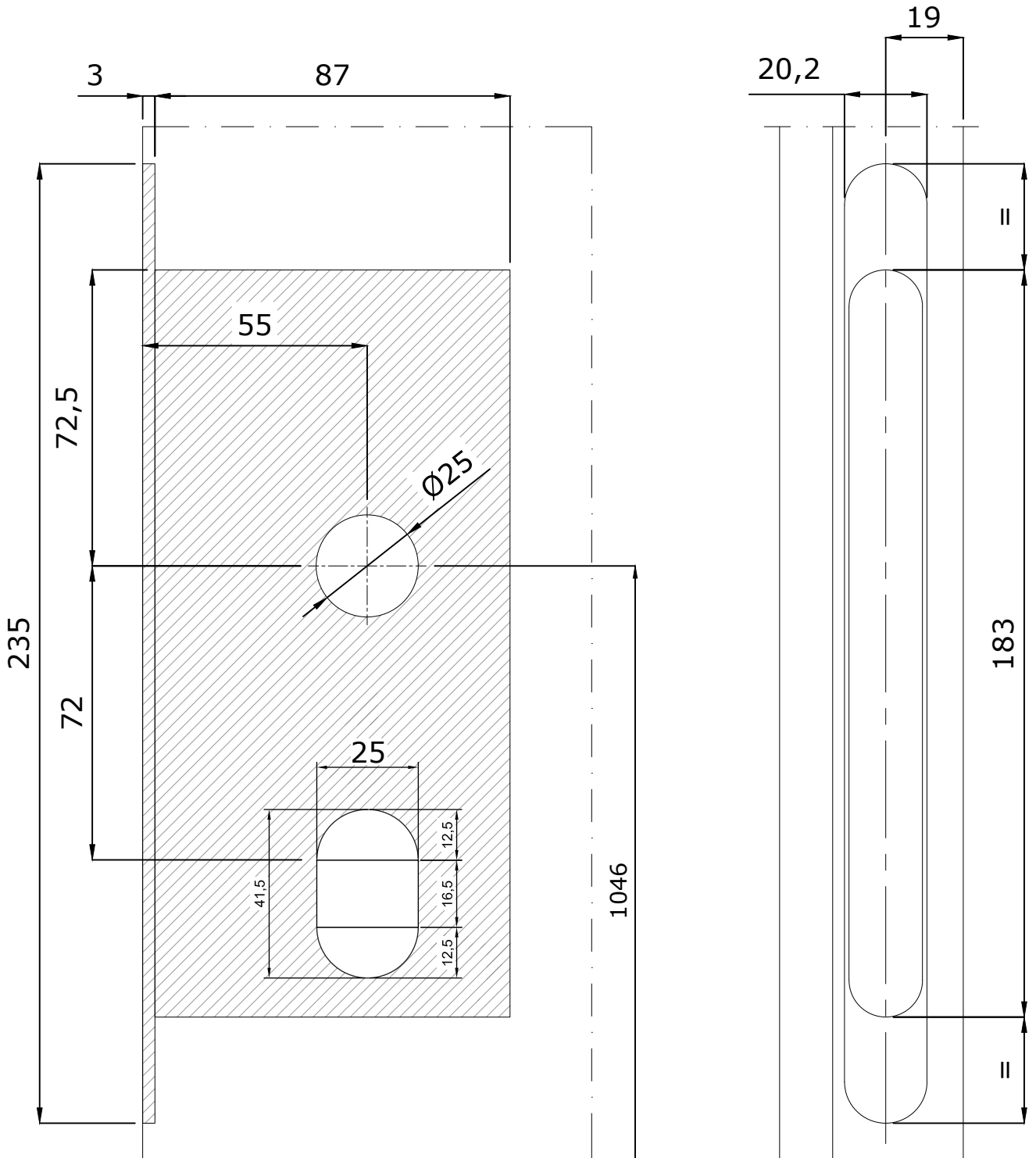
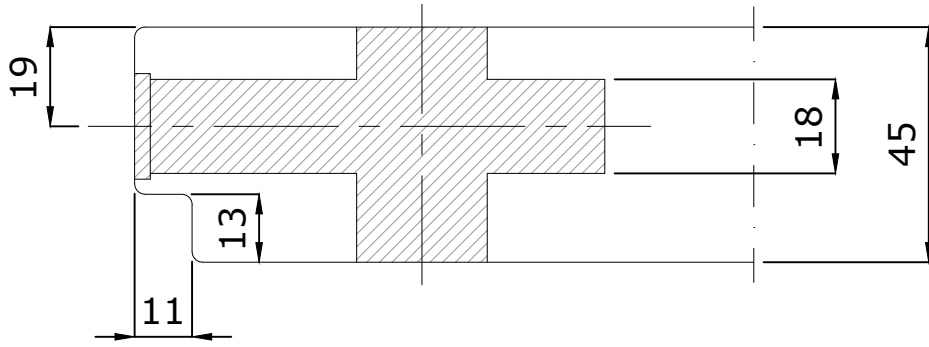
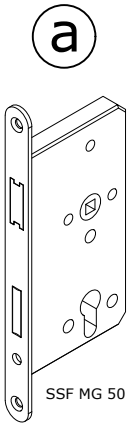


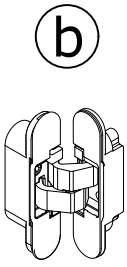
VORSPRUNG DURCH WEITSICHT

www.eclisse.de



Es werden drei verdeckt liegende Bänder bis zu einer Türbreite von 909 mm, und vier Bänder ab einer Breite von 910 mm gesetzt.





b

